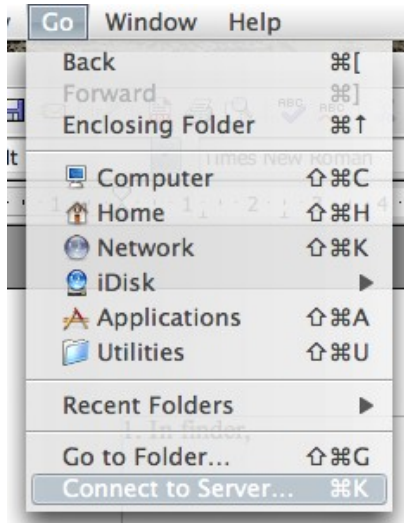
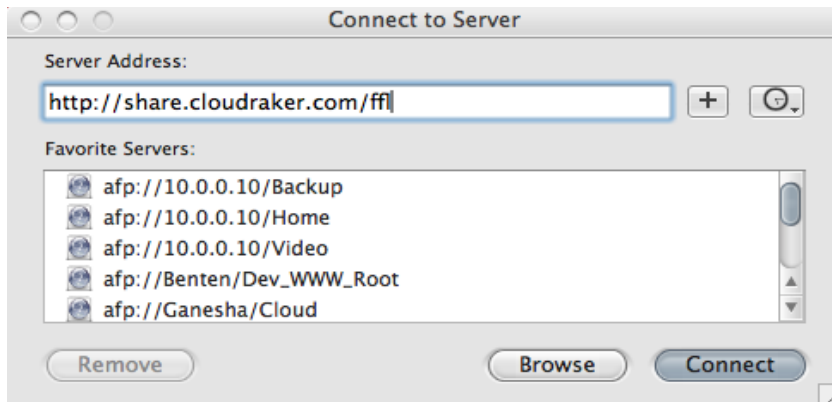


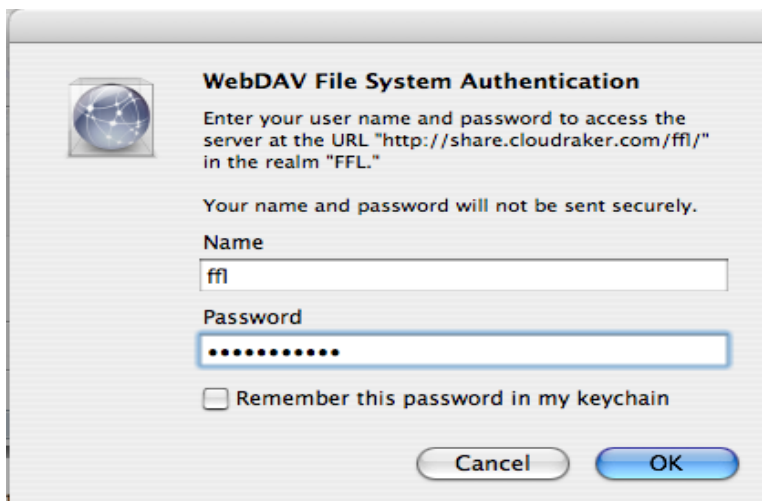
1. In finder, choose **Go** and **Connect to server**



2. Type in the WebDAV share name and click **Connect**



3. Enter username and password and click **OK**



As of now, there are three available shares:

<http://share.cloudraaker.com/cloud/>

accessible to any Cloud employee using their usual username and password

<http://share.cloudraaker.com/ffl/>

accessible by:

username: ffl

password: steprightin

<http://share.cloudraaker.com/xxx/>

accessible by:

username: xxx

password: openthedoor

We're working on getting ffl and xxx accessible to all Cloud employees using their username and password.